

2009



JET SKI Ultra 260X



SPECIFICATIONS	JT1500E9F
Engine Type	Supercharged 4-Stroke, 4-Cylinder, DOHC, Liquid-Cooled
Displacement	1,498 cm ³
Bore and Stroke	83 x 69.2 mm
Maximum Power	191kW (260ps) @ 7,750 rpm
Compression Ratio	8.4:1
Fuel Injection	DFI with 60mm Single Throttle Body
Ignition	TCBI with Digital Advance
Lubrication	Semi-Dry Sump
Maximum Thrust	7,051 N-m
Overall Length	3,370 mm
Overall Width	1,195 mm
Overall Height	1,150 mm
Curb Mass†	482 kg
Load Capacity	225 kg
Storage Capacity	200 litres
Fuel Capacity	78 litres
Oil Capacity	5.0 litres
Colours (2)	Sunbeam Red/Sunbeam Red Ebony/Galaxy Silver
Warranty	12 months

(Specifications subject to change without notice.)
 † Includes all necessary materials and fluids to operate correctly, full tank of fuel (more than 90% of capacity) and tool kit (if supplied).

* = Changes from previous model year.

Kawasaki reasserts its claim to the personal watercraft throne with the Ultra 260X. A direct descendent to the previous King of Jet Ski watercraft, the supercharged Ultra 250X, this model utilizes new pistons, cams, exhaust system, ignition timing, jet pump and a reinforced hull to reclaim its place atop the watercraft world.

Key Features:

- ◆ Supercharged Intercooled 4-Stroke Engine
- ◆ Stable and Sporty Handling in All Water Conditions
- ◆ 5-Position Adjustable Steering
- ◆ Massive Industry-Leading Storage Capacity
- ◆ Kawasaki Smart Steering Equipped

New for 2009

- * New pistons boost compression for more power and are more rigid for added durability.
- * New cams with higher lift help boost power.
- * New ignition timing helps increase power.
- * Bow sides are reinforced for increased rigidity to handle the increased power.
- * New impeller has revised pitch to match the increased power output of the engine for better acceleration performance.

◆ 1,498cc 4-Cylinder, DOHC 4-Stroke Engine

- Legendary Ninja®-inspired engine adapted for personal watercraft use.



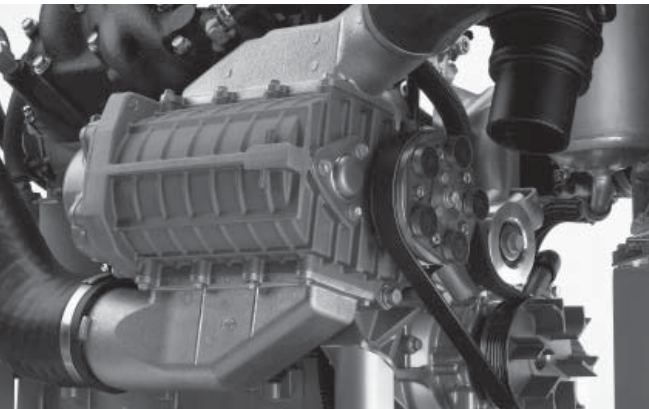
- Chrome composite plated cylinders are lightweight, durable, and quickly carry heat away from the combustion chamber and piston for supreme durability at high power output.
- Dry sump oil tank built into crankcase.
- Tip-over protection shuts engine off if craft tilts more than 61°.

4-Valve Cylinder Head

- High lift cams provide high performance.
- Better breathing for more power at high rpm.
- Provides maximum valve area for optimum flow.
- Corrosion-resistant materials used for durability in marine environment.

◆ Supercharger

- Roots-type supercharger produces large amounts of boost, even at low rpm, for instant and powerful acceleration right off idle.



- Every supercharger revolution force-feeds the engine two liters of high-pressure intake air at all rpm for a very flat yet meaty torque curve and step-free power across the rev range with none of the time lag associated with turbochargers.
- Two air bypass valves prevent over-boosting at low and medium rpm.

- Boosts power to the equivalent of a normally aspirated high-performance engine twice its size.

Intercooler

- Pressurizing the intake air heats it to extremely high temperatures which would rob power, but the liquid-cooled intercooler reduces intake air to ambient temperature, or even less, for higher combustion efficiency and more power.

Electronic Fuel Injection

- New high-flow fuel injectors at each cylinder complement the increased power output.
- Large 60mm throttle body for ample airflow.

Water Cooling

- Water jacket designed to ensure maximum cooling performance.
- Force fed from jet pump with inlet filter to prevent clogging.
- Water-cooled oil cooler helps regulate engine temperature.

TCBI Ignition with Digital Advance

- Transistorized ignition uses a digital microcomputer to precisely control optimum ignition timing.
- ECU and ignition coils are waterproof.

◆ Smart Learning Operation (SLO) mode

- Activated with a separate key, the Smart Learning Operation feature limits engine speed to approximately 5,800 rpm, which reduces maximum speed by approximately 30 percent so that unskilled operators can practice maneuvering the watercraft at reduced power until they become more familiar with its operation. When activated, SLO appears on the multifunction meter screen and FPO (Full Power Operation) appears when normal operation is selected.



Water-Jacketed Semi-Dry Exhaust System

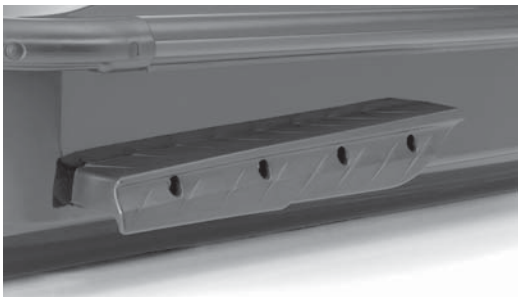
- Double-walled exhaust manifold helps reduce noise.
- Water surrounding the exhaust system lowers engine compartment temperatures for more power.
- Semi-dry exhaust system is designed to prevent water from entering engine if the boat should capsizes.
- New single waterbox muffler lowers noise and reduces weight.

◆ **Fiberglass Hull**

- Designed using feedback from Kawasaki's IJSBA championship-winning machines, the hull is longer and wider than that of the STX-15F and offers the industry's best stability and responsive handling in calm and rough waters.



- Deep 22.5-degree V-angle at the bottom of the hull provides better "grip" for racing-like performance.
- Sponsons extend further from the hull to enhance straight-line performance and high-speed maneuverability.



- Four Kawasaki Splash Deflector (KSD) ridges across the bottom of the bow minimizes spray in a wide variety of conditions for greater rider concentration.
- High-performance ride plate with an added groove from the center to the rear enhances handling.
- Gel coat for a deep, lustrous, scratch-resistant finish.
- Standard re-boarding step

◆ **Kawasaki Smart Steering**

- A steering sensor is linked to the ECU to aid in boat handling when the throttle is quickly released from high speed.

Direct Drive Axial Flow Pump

- Large pump houses a big 155mm three-blade oval edge stainless steel impeller designed for low cavitation and improved thrust at higher speeds.
- Oval leading edge blade shape for maximum efficiency, minimum cavitation.

- Eight-vane guide smoothes and regulates water flow from the impeller for efficient and powerful propulsion.
- Direct drive from engine to pump; no gear reduction unit. Engine turns lower RPM for less stress, wear, fuel consumption and vibration.
- Injection molded plastic reverse bucket is more durable and provides better backing action.

Largest in Class Capacity Fuel Tank

- 78 Litre fuel tank increases cruising range

LCD Multifunction Meter System

- Includes speedometer, tachometer, hour meter, clock, trip distance, trip time and fuel level.



- Warning lights alert you to low oil, low fuel, high engine temperatures or injection troubles.
- Includes 21-code troubleshooting function with 5 problem memory.
- Computer hook-up allows easy retrieval of entire troubleshooting history.

Luxurious Cockpit

- Five-way adjustable handlebar suits a wide range of riders and riding styles and allows comfortable stand-up or seated riding positions.



- Easy-to-use left-side reverse control.

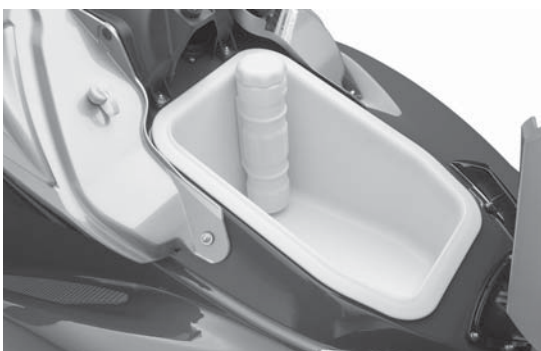


JET SKI Ultra 260X

- Two-piece seat is designed to be very comfortable for either standing or seated riding.

Large Storage Capacity

- Huge 200 litre front storage compartment with removable tray.



- Center console storage area has a detachable drink holder with space for two water bottles.



Genuine Kawasaki Accessories

- See the current applicable Kawasaki accessory catalog or www.kawasaki.com.au for all of the latest authentic Kawasaki accessories available for this model.

